



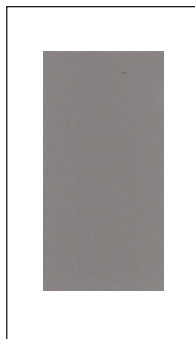
# BRICKFORM® Liquid Integral Color™

FOR TECHNICAL ASSISTANCE PLEASE CALL 800-483-9628

Different types of finishing techniques and curing methods will alter the finished appearance of Liquid Color. A job-site sample or test slab should be done, using the specified materials, as well as the finishing and curing techniques that will be used on the project. Batch to batch uniformity must be maintained to produce consistent color.

Custom Colors: With the BRICKFORM Liquid Color system virtually any pre-established industry color can be matched with minimal lead time. Non-established colors can also be matched with longer lead times. Call BRICKFORM or your local BRICKFORM Distributor for more information. Different colors in cement, as well as some sands and water content will result in different colors.

BASE COLOR: The colors on this color chart approximate laboratory samples of troweled concrete made using Type II Gray Portland Cement (see base color sample), Silica Sand, and water to achieve a 4-inch slump.



## Stock Colors



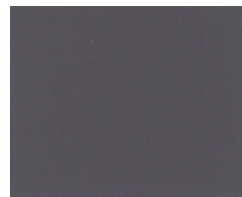
LC-2310 Mesa Buff



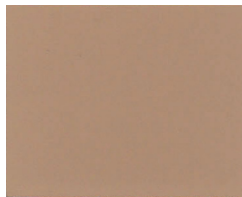
LC-2115 Aspen



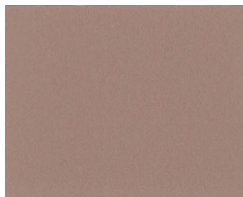
LC-2120 Pewter



LC-2225 Charcoal



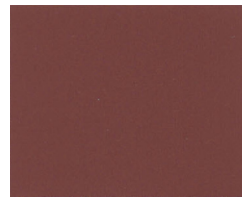
LC-0310 Cream Beige



LC-2230 Desert Sand



LC-2235 Terra Cotta

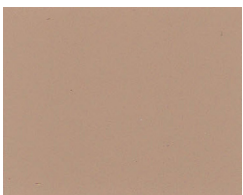


LC-2240 Brick Red

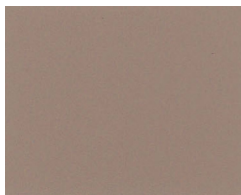
## Standard Colors



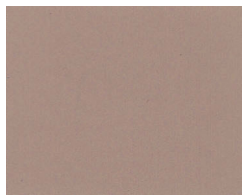
LC-2245 Limestone



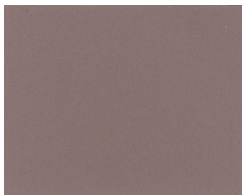
LC-2250 Sombrero Buff



LC-2255 Coachella Sand



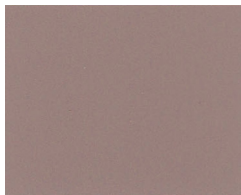
LC-2360 San Diego Buff



LC-2165 Coffee



LC-2170 Phoenix Tan



LC-1015 Blush Beige

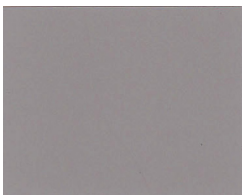


LC-1090 Sun Buff

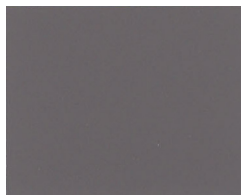
## Designer Colors



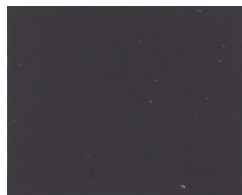
LC-0250 Oyster White



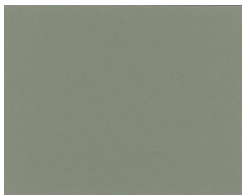
LC-2275 Porcelain Gray



LC-2280 French Gray



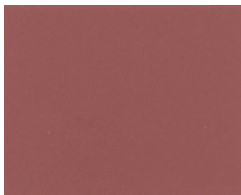
LC-2285 Dark Gray



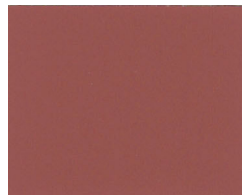
LC-2390 Willow Green



LC-2295 Dusty Mauve



LC-2200 Quarry Red



LC-2350 Sedona Red

BRICKFORM®, A Division of Solomon Colors, Inc.  
 11061 Jersey Blvd. Rancho Cucamonga, CA 91730  
 Customer Service: 800-483-9628 Corporate Office: 909-484-3399  
 Fax: 217-744-2605 [www.brickform.com](http://www.brickform.com)



# BRICKFORM® Liquid Integral Color

FOR TECHNICAL ASSISTANCE PLEASE CALL 800-483-9628

BRICKFORM Liquid Color is UV-resistant, iron-oxide pigment that is pre-packaged to integrally color concrete by the cubic yard. Finishing techniques like brooming, troweling, acid etching, or sandblasting will create different hues and variations of the same color. More color and design can be achieved by using BRICKFORM Texture Mats™ and BRICKFORM Antique Release Agent™. Custom color matching in almost any color adds even more variety, making Liquid Color the perfect choice for your decorative concrete project.

## FEATURES

- ▶ One Percent Tolerance To Established Plant Standard
- ▶ UV-Resistant Color
- ▶ Mixed At The Job Site Or Batch Plant
- ▶ Meets ASTM Standard C979

## BRICKFORM Tips

### MIX DESIGN

The concrete should be designed to meet the strength and finishing requirements of the project with a minimum cement content of 6 sacks per cubic yard and a maximum slump of 4 inches. Use clean aggregates with low soluble salt content. Weigh all aggregates and cement accurately for each batch. DO NOT LOAD the mixer beyond the recommended capacity. Liquid Color may be added any time to the concrete mixture. Mix a minimum of 10 minutes at HIGH SPEED before pouring. Additional water to facilitate pouring should be kept to a minimum. Do not use reactive aggregates or Calcium Chloride or any admixture containing Calcium Chloride. Liquid Color is compatible with plasticizers and air-entraining products designed for colored concrete.

### BATCH TO BATCH UNIFORMITY

Consistent color can only be achieved by using the same sand, cement, aggregates, water content and mixing time for the color. Differences in colors of cement, sand, aggregates and volume of water in the mix can alter the finished color. A job-site sample or test slab is recommended.

### PREPARATION OF THE SUBGRADE

The subgrade must be uniformly graded, compacted and moistened, but free of standing water. Follow professional standards and practices, including those published by the American Concrete Institute (ACI).

### CONCRETE PLACEMENT METHODS

The slump must be consistent from load to load. Additional water to facilitate placement must be kept to a minimum. Do not add water after a portion of the concrete load has been discharged. Do not temper concrete that has started to set.

### FINISHING TECHNIQUES

*The colors on this color chart are stocking colors and are available, in most cases, for same day shipment. Custom colors that are matched to a pre-established industry equivalent, are available for same day or next day shipment. Custom colors with no pre-established industry equivalent, may require a minimum lead time of two weeks. This color chart is a representation only and does not guarantee that the final color will be an exact match. Gray cements, white cements and variations in aggregates will produce different colors. Finished texture, timing of operations, curing, or forming methods, release agents, and surface treatments will each affect the finished color. Samples should be made with the same materials and methods that will be used for the project.*

*BRICKFORM TIPS is abbreviated information taken from BRICKFORM's Liquid Color Technical Information Sheet and Material Safety Data Sheet. Read both references before attempting to use this product. BRICKFORM strongly recommends a representative jobsite sample.*

Initial floating should be discontinued as soon as the surface becomes wet. Floating may be resumed after the surface water disappears. The final finish such as a broomed, or imprinted surface may be completed after floating. Maintain consistent finishing techniques and avoid hard-troweling for the most uniform color results. Over-troweling will discolor the concrete. Additional water should not be applied to the concrete surface during finishing.

### CURING

Do not attempt to cover, fog, or otherwise CURE the concrete for a minimum of 24 hours. After 24 hours, a clear, non-yellowing, breathable, UV-stable, acrylic curing compound may be used. In areas with high heat and low humidity, a non-staining evaporation controller and/or sealers may be applied sooner. If conditions are cool or if the subgrade or concrete is overly wet, efflorescence may appear. Remove the white powder before sealing by using BRICKFORM Efflorescence Remover.

### WARRANTY

This product is not for public use and is intended for use only by licensed concrete contractors, experienced and trained in the use of these products. It is warranted to be of uniform quality within manufacturing tolerances. The manufacturer has no control over the use of this product, therefore, no warranty, expressed or implied, is or can be made either as to the effects or results of such use. In any case, the manufacturer's obligations shall be limited to refunding the purchase price of replacing material proven to be defective. The end user shall be responsible for determining product's suitability and assumes all risks and liability.

**For complete information, request a copy of BRICKFORM's Liquid Color Technical Information Sheet.**

BRICKFORM®, A Division of Solomon Colors, Inc.

11061 Jersey Blvd. Rancho Cucamonga, CA 91730

Customer Service: 800-483-9628

Corporate Office: 909-484-3399

Fax: 217-744-2605

[www.brickform.com](http://www.brickform.com)

Distributed by: